


DECAUVILLE / DECAUVILLE

Ruote Decauville in acciaio bonificato tornito durezza da 180 a 230 HB, superficie di scorrimento con inclinazione di 3° rispetto all'asse, resistenza all'usura, alte capacità di carico statico e dinamico, mozzo su cuscinetti a sfere, disponibili in una gamma di diametri che va da mm 50 a mm 400 e portate comprese tra Kg 500 e Kg 9000.

Decauville wheels in special hardened steel, with ball bearings, hardness from 180 to 230 HB, tread ascent to axle 3°, high static and dynamic load capacity and high abrasion resistance, hub on shielded ball bearings, available in a range of diameters between mm 50 and mm 400 and load capacities between Kg 500 and Kg 9000.

		Supporti / Castors			
Ruota Wheel	Descrizione Description	Medio Medium duty	Pesante Heavy duty	Extra pesante Extra heavy duty	Extra pesante gemellato Twin extra heavy duty
 700	Ruota in acciaio bonificato tornito <i>Wheel in special hardened steel</i>				

Pag / Page 212

RUOTA / WHEEL



700

700

Ruota Decauville
Decauville wheel



500 ÷ 9000



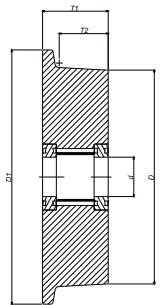
-20 ÷ +120





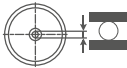



Ruota decauville
in acciaio bonificato
tornito durezza da 180
a 230 HB, superficie
di scorrimento con
inclinazione di 3°
rispetto all'asse,
resistenza all'usura,
alte capacità di carico
statico e dinamico.

Decauville wheel
in special hardened
steel, with ball
bearings, hardness
from 180 to 230 HB,
tread ascent to axle 3°,
high static and dynamic
load capacity and high
abrasion resistance.

La ruota può essere assemblata con tutti i supporti di tipo medio, pesante ed extra-pesante.
The wheel can be assembled with all medium, heavy and extra-heavy duty castors.



					
D (mm)	D1 (mm)	T1 (mm)	T2 (mm)	d (mm)	kg
50	62	40	30	15	500
75	100	40	30	20	800
100	125	50	40	25	1200
125	150	50	40	25	1500
150	180	60	48	30	2000
200	240	60	48	35	2500
250	290	75	60	45	4000
300	345	90	72	60	7000
400	445	90	72	80	9000

NOTE / NOTES

